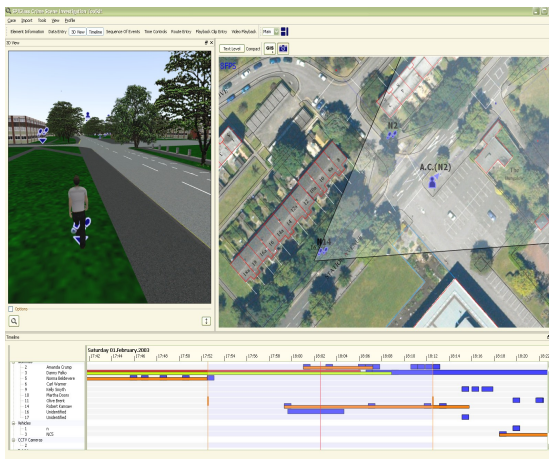




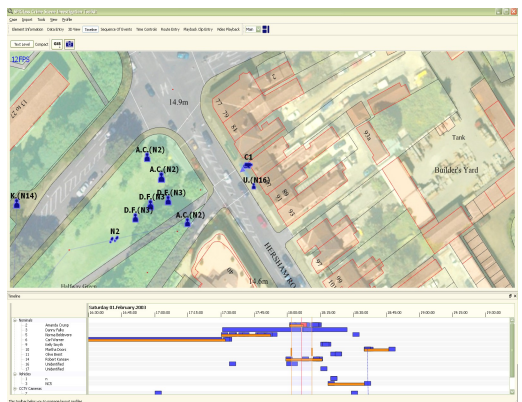
Crime Scene Reconstruction

Easily and quickly recreates scenes with moving 3D graphics to show all elements including nominals, vehicles and scenery.



- Moving 3D visual representation of Holmes2 data and other information to help solve crimes quickly.
- Scenes can be generated internally without the delay and costs of external specialist consultants
- ‘What-ifs’ identify productive lines of enquiry during critical early stages

- Easy to understand results on a screen - ‘a picture is worth a thousand words’
- Information can be shared amongst investigating team members quickly
- Makes communication with the press and public easier and more effective



Product Features

Spiglass® is designed for major investigations where time is critical.

It makes sense of text statements by turning them into moving 3D scenes which show all nominals and what happened and when.

Easy Data Entry

- Integrates with Holmes2 data but also allows direct input of information (e.g. from excel spreadsheet) to speed up investigations
- New information entered into Holmes2 can be used without tedious data re-entry
- Automatic conversion of nominal classifications (ethnic type etc.) using Holmes 2 data converted into correct screen representation

Instant ability to do 'what-ifs' include:

- Lines of sight
- Challenging alibis
- Identifying lines of enquiry

Secure

- Users and every action are logged in audit trail
- Allows notes on decisions taken to be added into database
- Does not affect existing Holmes2 data

Easy for analysts to use

- No computer graphics or programming expertise needed
- Point and click setup
- Automatic import of statements
- Re-use previously generated 3D scene areas
- Spend as little or as much time as needed on scene construction

Highly Advanced 3D scene generation system

- Automatically generates roads, buildings and terrain shapes from Ordnance Survey (OS) digital data or other data sources
- Generates timelines automatically
- Easy point and click improvements to scene using library of pictures or photographs from the scene of crime
- Can be enhanced and improved off-line if needed for use in court proceedings or reconstructions

Different viewpoints include:

- All available nominals
- From inside vehicles
- CCTV camera viewpoints
- Filters allow viewer to only see selected nominals

Extensive user support

- Training courses
- Telephone based help and support
- On site help available
- Visual scene improvement service

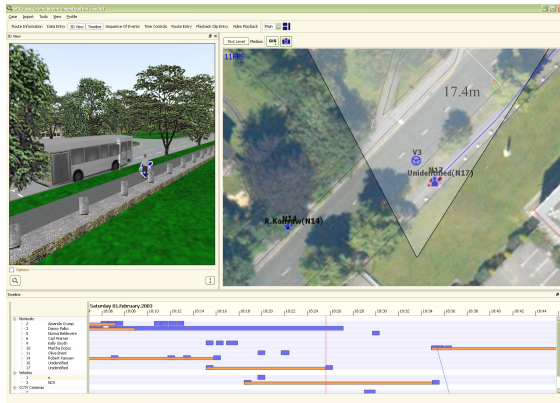


Flexible Scene views

- 2D plan view including nominals, overlay of mobile cells maps, CCTV locations, aerial photography, custom GIS information or user generated data (all selectable by layers)
- 3D view includes scene of crime, nominals, vehicles, events
- Move backward and forward in time to show what happened, and when

System requirements

- Runs on standard PC systems supplied and managed by XPI Simulation or existing force owned Windows based PCs
- Networked or standalone systems supported



About XPI Simulation Ltd.

Founded in 2005 as a Management Buy Out of a military simulation company

Our Company mission is to bring the benefits of military simulation and 3D visualization into commercial / security / public service areas

For further information on our products and services contact our sales department on: 0203 044 2099 or email: sales@xpisimulation.com

MEMBER OF:



The Association of
Police and Public
Security Suppliers



www.xpisimulation.com

NB Specifications are subject to continual change during development
All trade marks acknowledged

1.2 November 07
Copyright © XPI Simulation Ltd. 2007